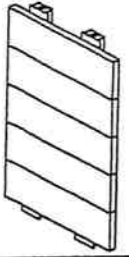
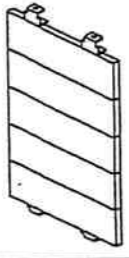
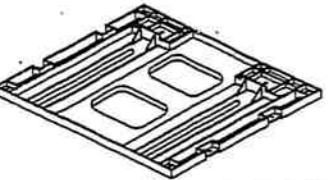
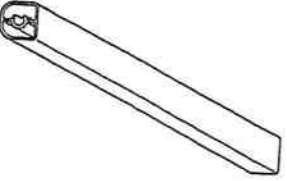

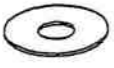


# NKAJ-0525N3, R3·G INSTRUCTION

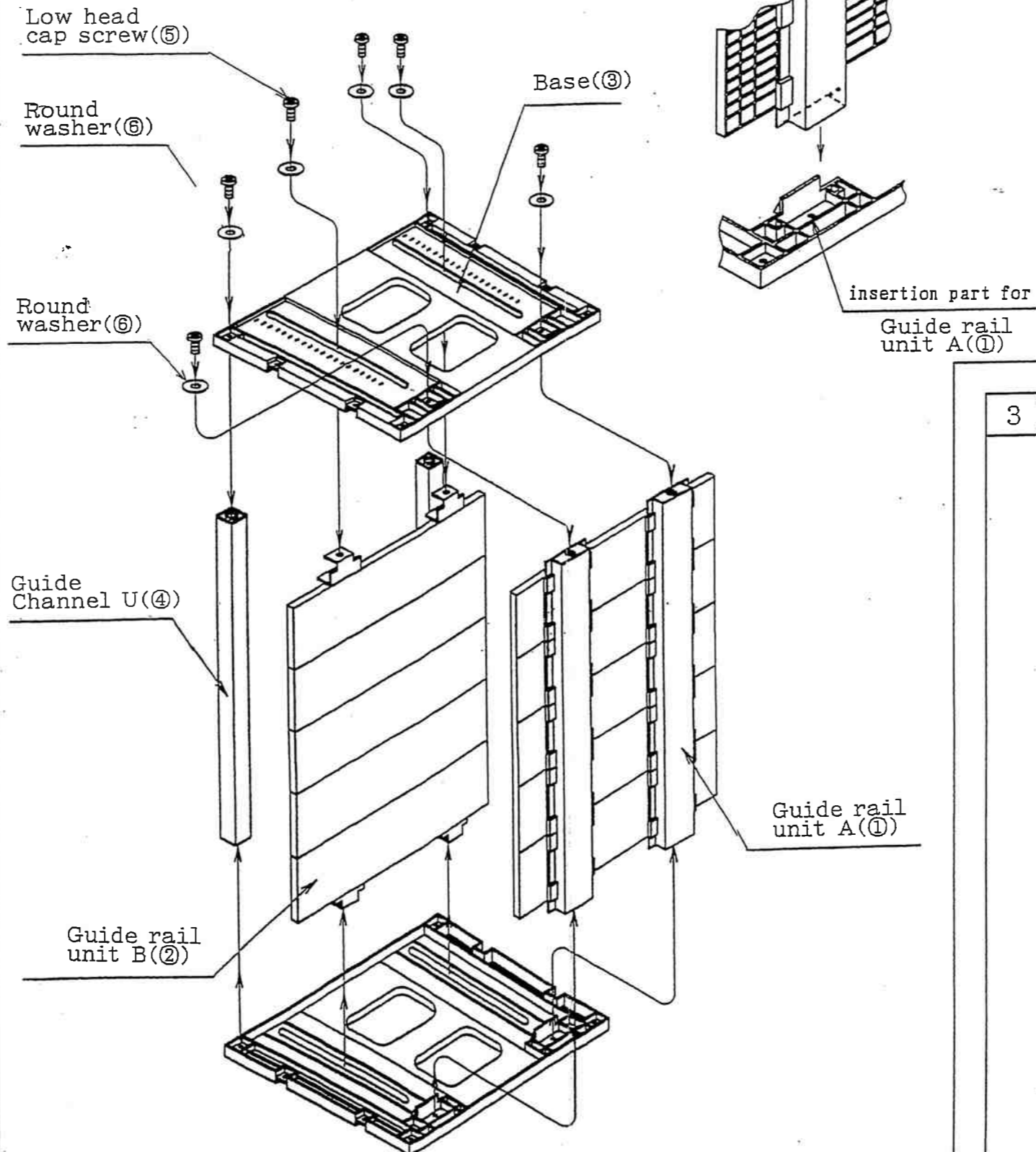
No	Part Name	Qty
①	Guide rail unit A 	1
②	Guide rail unit B 	1
③	Base 	2
④	Guide Channel U 	2
⑤	Low head cap screw 	12
⑥	Round washer 	12

### Caution!

- Do not use for purposes other than PCB storage.
- Do not sit or stand on unit.
- Do not throw or drop unit.
- To avoid catching fingers in moving parts, always lock adjustment levers when handling.

## 1 Assembling Main Body

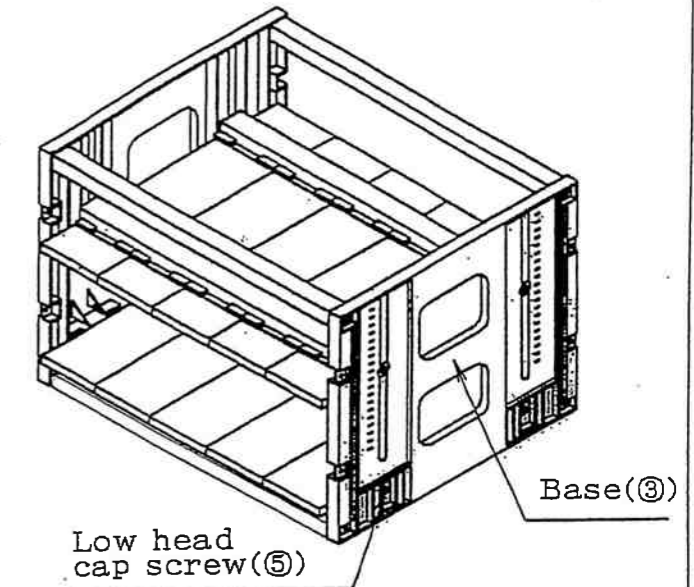
- Insert the Guide rail unit A(①) into its insertion part of Base(③).
- Insert the Guide channel U(④) into its insertion part of Base(③).
- Put the Guide rail unit B(②) on the long-hole part of Base(③), to get the rail surface to be face-to-face with the Guide rail unit A(①).
- Clamp the Guide rail unit A(①), the Guide rail unit B(②) and the Guide channel U(④) tentatively with Low head cap screws(⑤).  
Use the Round washer(⑥) for the Guide rail unit A(①) and Guide rail unit B(②), and the Square washer(⑦) for the Guide channel U(④).



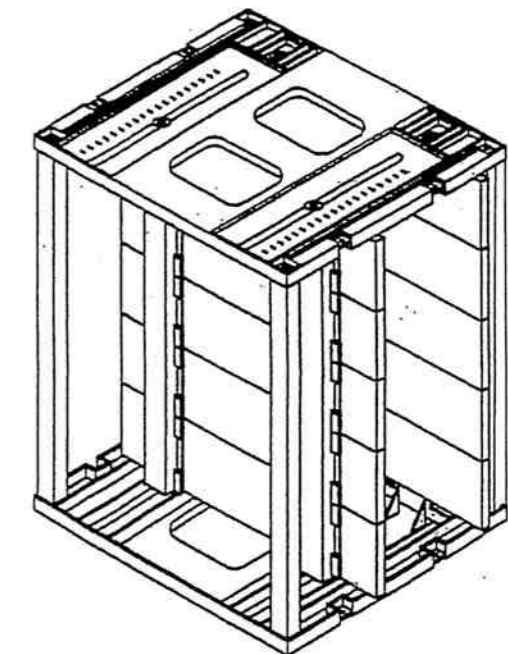
## 2 Main Assembly(Fixing)

(Fix the main body on a stable, flat table on the like.)

- Lay the rack on its side as illustrated below, and securely fix Low head cap screws(⑤) with the Base(③) pressed against the table. (Fix in 16 positions on the right and left sides, with 25~30kgf·cm of clamp torque.)



## 3 The last illustration



NIX, INC.

Head Office:  
2-3-3, Minatomirai, Nishi-ku  
Yokohama 220-6108, Japan  
tel. 045-221-2001  
fax. 045-221-1230