

Parts

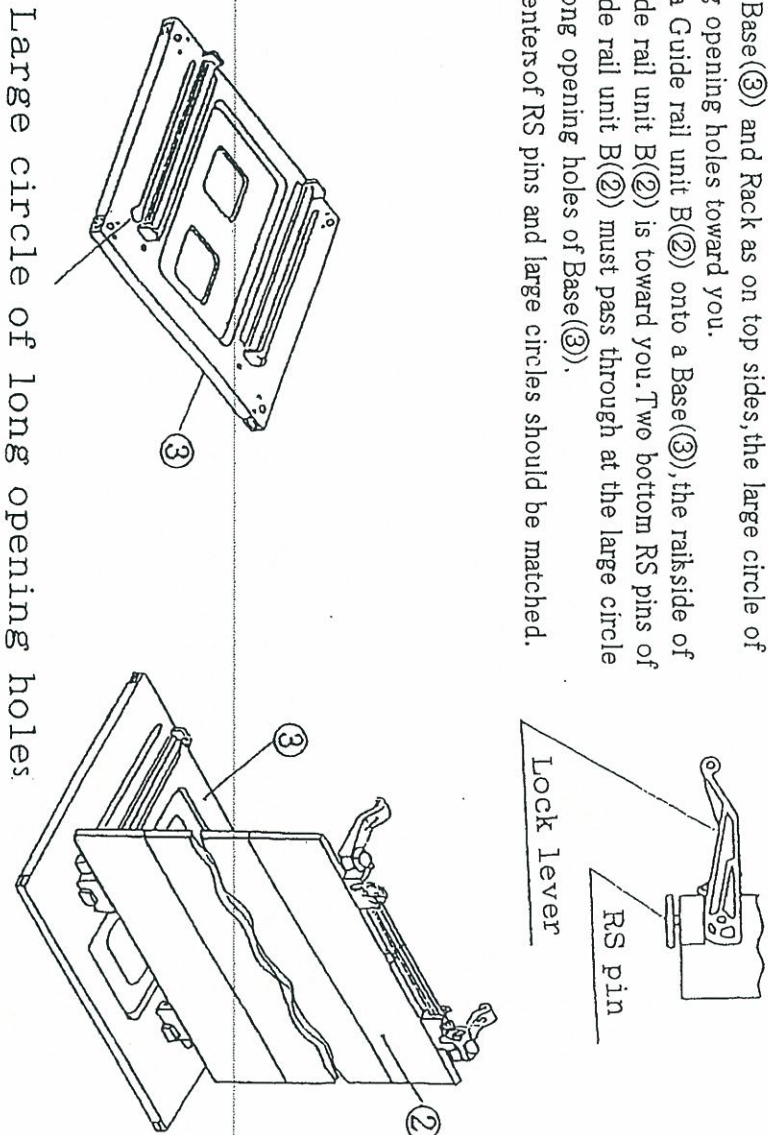
No	Part Name	Qty	No	Part Name	Qty
①	Guide rail unit A	1	⑤	Cap screw	12
②	Guide rail unit B	1	⑥	Round washer	12
③	Base	2	⑦		
④	Guide channel	4	⑧		

Reference page 2/2 for assembly instructions

1 Setting the Guide rail unit B onto the bottom side Base

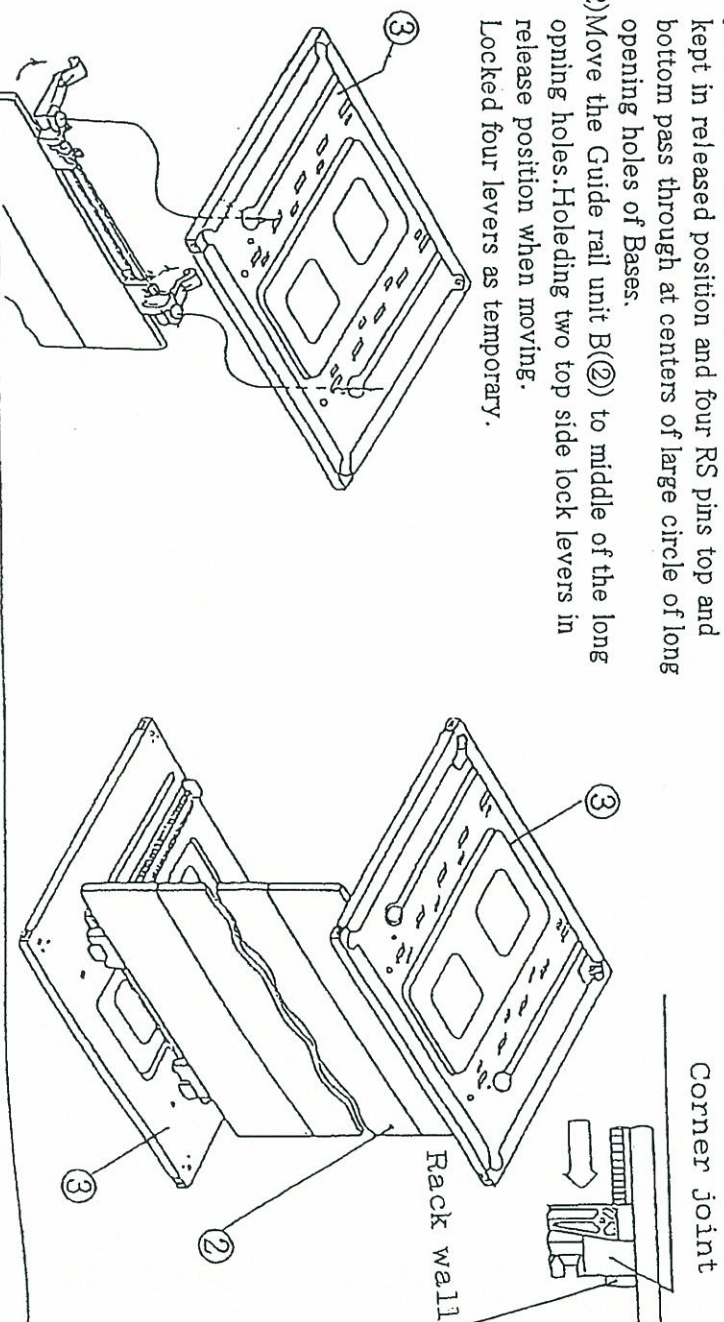
- Put Base(③) and Rack as on top sides, the large circle of long opening holes toward you.
- Fit a Guide rail unit B(②) onto a Base(③), the rails side of Guide rail unit B(②) is toward you. Two bottom RS pins of Guide rail unit B(②) must pass through at the large circle of long opening holes of Base(③).

(Centers of RS pins and large circles should be matched.)



2 Sliding the Guide rail unit B into two top and bottom side Bases

- Put another Base onto the Guide rail unit B(②) in the position of Chapter #1, top side of two lock levers are kept in released position and four RS pins top and bottom pass through at centers of large circle of long opening holes of Bases.
- Move the Guide rail unit B(②) to middle of the long opening holes. Holding two top side lock levers in release position when moving. Locked four levers as temporary.

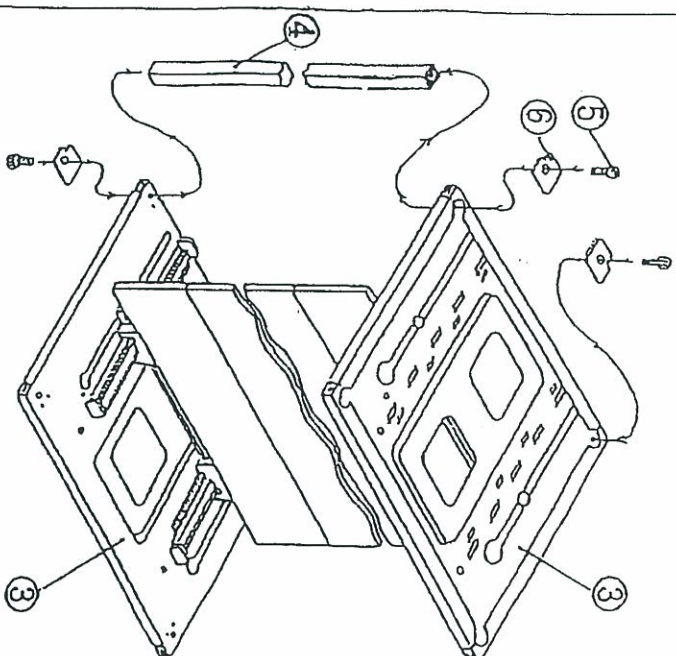


0525 4C

3 Attaching two Guide channels

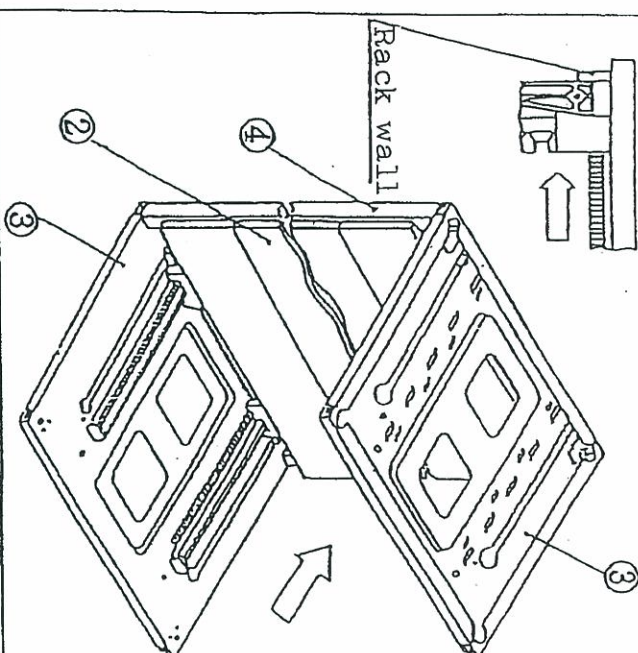
(Optional available four Guide channels)

- (1) Put two Guide channels(4) in between Bases(3) on two corners that the back side of rail side of Guide rail unit B(2). Temporarily screw up two Guide channels(4) with four Cap screws(5) and four Round washers(6).



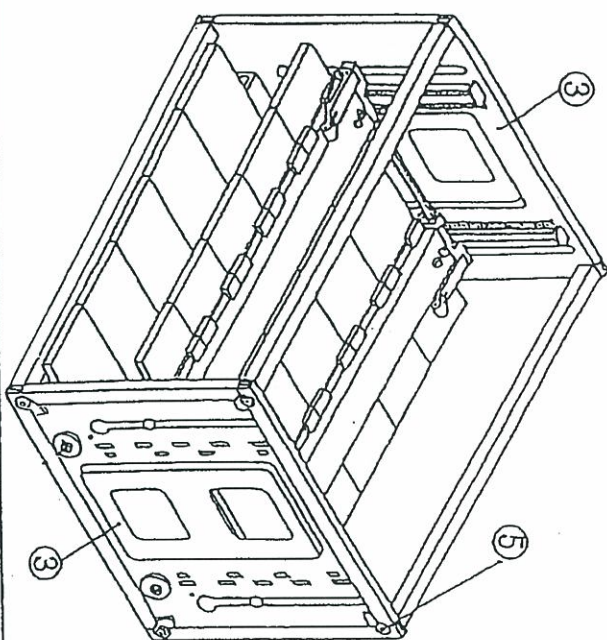
4 Phase shifts confirmation to remain parallel

- (1) Release four lock levers and push the Guide rail unit B(3) all the way to the end of long opening holes. Check to be sure all four lock lever units meet rack walls as illustrated.
- (2) If any lock levers could not reach the walls, back to Chapter #2 and make sure to match centers of RS pins and large circles.

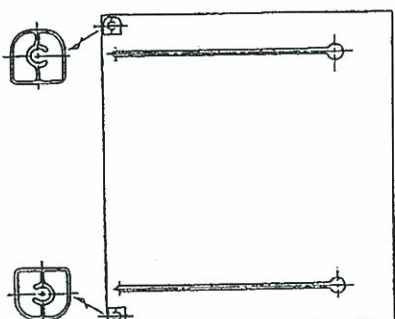


5 Finalize assembly

- (1) Lay the magazine with Guide rail unit A(1) down on a flat surface to assure all of Parts on the accurate positions.
- (2) Tighten down all eight Cap screws(5) as 25-30kgf.cm.

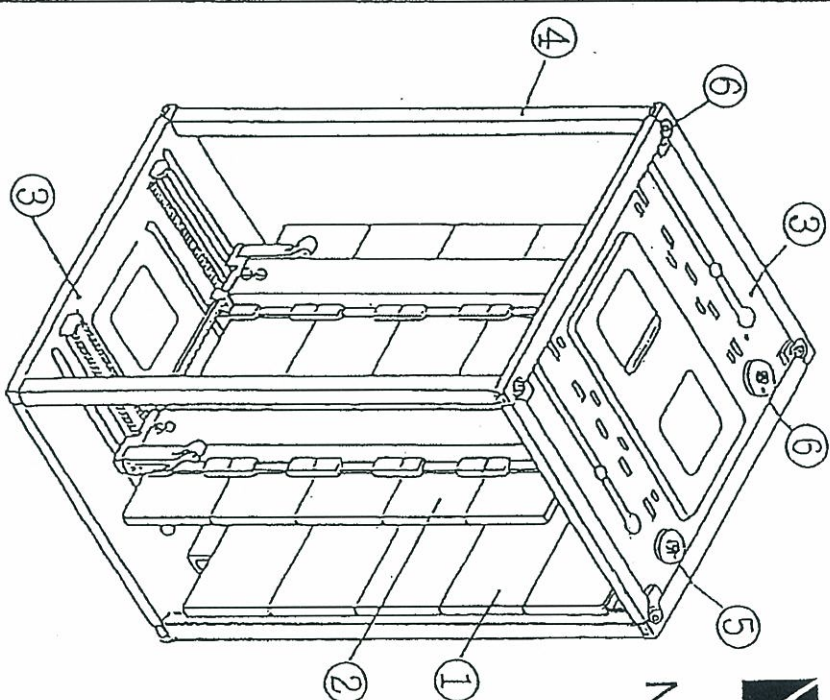
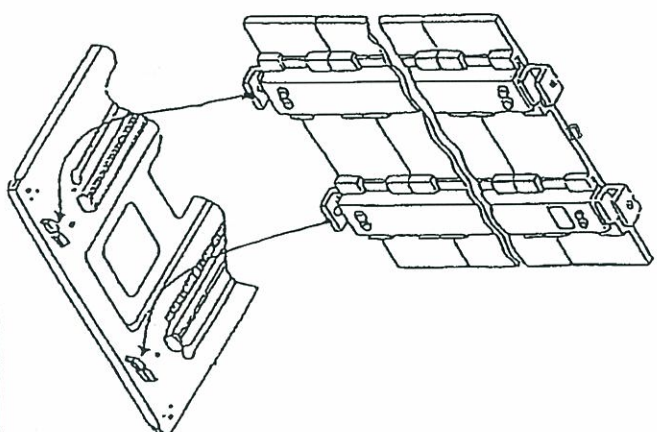
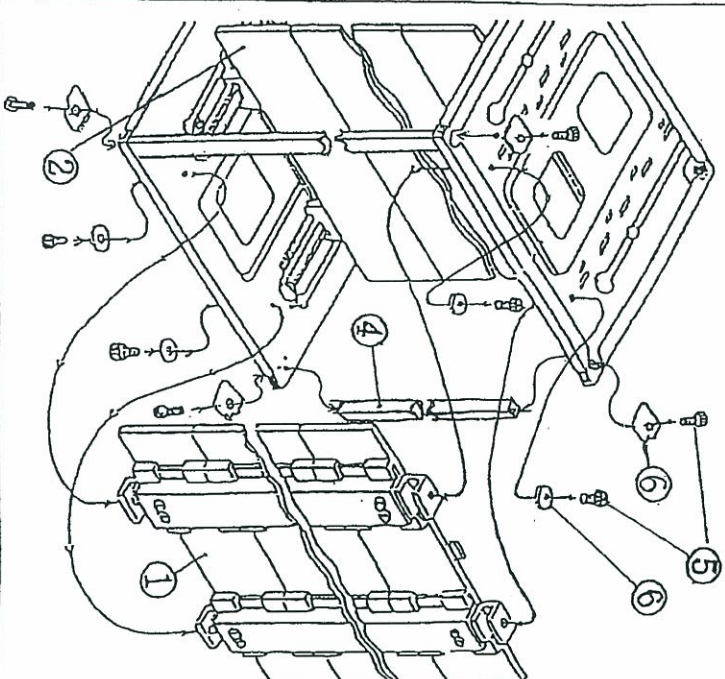


Guide Channel Installation



5 Attaching Guide rail unit A

- (1) Put a Guide rail unit A(1) in between Bases(3) as illustrated. Screw up with four Cap screws(5) and four Round washers(6) as temporarily.
- (2) Temporarily screw up two Guide channels(4) with four Cap screws(5) and four Round washers(6).



NIX, INC.

NIX, INC.

□Head Office
Queen's Tower B SF.2-3-3 Minatomirai, Nishi-ku, Yokohama
220-6108, Japan
tel:045-221-2001(Main) fax:045-221-1230